



**HAL**  
open science

## Discovery of Pulsed $\gamma$ -rays from PSR J0034-0534 with the Fermi LAT: A Case for Co-located Radio and $\gamma$ -ray Emission Regions

A. A. Abdo, Markus Ackermann, Marco Ajello, A. Allafort, Luca Baldini, Jean Ballet, Guido Barbiellini, D. Bastieri, K. Bechtol, R. Bellazzini, et al.

### ► To cite this version:

A. A. Abdo, Markus Ackermann, Marco Ajello, A. Allafort, Luca Baldini, et al.. Discovery of Pulsed  $\gamma$ -rays from PSR J0034-0534 with the Fermi LAT: A Case for Co-located Radio and  $\gamma$ -ray Emission Regions. *The Astrophysical Journal*, 2010, 712, pp.957-963. 10.1088/0004-637X/712/2/957 . in2p3-00475596

**HAL Id: in2p3-00475596**

<https://in2p3.hal.science/in2p3-00475596v1>

Submitted on 27 Sep 2024

**HAL** is a multi-disciplinary open access archive for the deposit and dissemination of scientific research documents, whether they are published or not. The documents may come from teaching and research institutions in France or abroad, or from public or private research centers.

L'archive ouverte pluridisciplinaire **HAL**, est destinée au dépôt et à la diffusion de documents scientifiques de niveau recherche, publiés ou non, émanant des établissements d'enseignement et de recherche français ou étrangers, des laboratoires publics ou privés.



Distributed under a Creative Commons Attribution 4.0 International License

## DISCOVERY OF PULSED $\gamma$ -RAYS FROM PSR J0034–0534 WITH THE *FERMI* LARGE AREA TELESCOPE: A CASE FOR CO-LOCATED RADIO AND $\gamma$ -RAY EMISSION REGIONS

A. A. ABDO<sup>1,2</sup>, M. ACKERMANN<sup>3</sup>, M. AJELLO<sup>3</sup>, A. ALLAFORT<sup>3</sup>, L. BALDINI<sup>4</sup>, J. BALLE<sup>5</sup>, G. BARBIELLINI<sup>6,7</sup>, D. BASTIERI<sup>8,9</sup>, K. BECHTOL<sup>3</sup>, R. BELLAZZINI<sup>4</sup>, B. BERENJI<sup>3</sup>, R. D. BLANDFORD<sup>3</sup>, E. D. BLOOM<sup>3</sup>, E. BONAMENTE<sup>10,11</sup>, A. W. BORGLAND<sup>3</sup>, A. BOUVIER<sup>3</sup>, J. BREGEON<sup>4</sup>, A. BREZ<sup>4</sup>, M. BRIGIDA<sup>12,13</sup>, P. BRUEL<sup>14</sup>, T. H. BURNETT<sup>15</sup>, S. BUSON<sup>9</sup>, G. A. CALIANDRO<sup>16</sup>, R. A. CAMERON<sup>3</sup>, F. CAMILO<sup>17</sup>, P. A. CARAVEO<sup>18</sup>, S. CARRIGAN<sup>9</sup>, J. M. CASANDJIAN<sup>5</sup>, C. CECCHI<sup>10,11</sup>, Ö. ÇELİK<sup>19,20,21</sup>, A. CHEKHTMAN<sup>1,22</sup>, C. C. CHEUNG<sup>1,2</sup>, J. CHIANG<sup>3</sup>, S. CIPRINI<sup>11</sup>, R. CLAUS<sup>3</sup>, I. COGNARD<sup>23</sup>, J. COHEN-TANUGI<sup>24</sup>, J. CONRAD<sup>25,26,59</sup>, R. CORBET<sup>19,21</sup>, M. E. DECESAR<sup>19,27</sup>, C. D. DERMER<sup>1</sup>, G. DESVIGNES<sup>23</sup>, A. DE ANGELIS<sup>28</sup>, F. DE PALMA<sup>12,13</sup>, S. W. DIGEL<sup>3</sup>, M. DORMODY<sup>29</sup>, E. DO COUTO E SILVA<sup>3</sup>, P. S. DRELL<sup>3</sup>, R. DUBOIS<sup>3</sup>, D. DUMORA<sup>30,31</sup>, C. ESPINOZA<sup>32</sup>, C. FARNIER<sup>24</sup>, C. FAVUZZI<sup>12,13</sup>, S. J. FEGAN<sup>14</sup>, W. B. FOCKE<sup>3</sup>, M. FRAILIS<sup>28</sup>, P. C. C. FREIRE<sup>33</sup>, Y. FUKAZAWA<sup>34</sup>, S. FUNK<sup>3</sup>, P. FUSCO<sup>12,13</sup>, F. GARGANO<sup>13</sup>, D. GASPARRINI<sup>35</sup>, N. GEHRELS<sup>19,27,36</sup>, S. GERMANI<sup>10,11</sup>, G. GIAVITTO<sup>6,7</sup>, N. GIGLIETTO<sup>12,13</sup>, F. GIORDANO<sup>12,13</sup>, T. GLANZMAN<sup>3</sup>, G. GODFREY<sup>3</sup>, I. A. GRENIER<sup>5</sup>, M.-H. GRONDIN<sup>30,31</sup>, J. E. GROVE<sup>1</sup>, L. GUILLEMOT<sup>30,31,33</sup>, S. GUIRIEC<sup>37</sup>, D. HADASCH<sup>38</sup>, A. K. HARDING<sup>19</sup>, E. HAYS<sup>19</sup>, G. HOBBS<sup>39</sup>, D. HORAN<sup>14</sup>, R. E. HUGHES<sup>40</sup>, G. JÓHANNESSEN<sup>3</sup>, A. S. JOHNSON<sup>3</sup>, T. J. JOHNSON<sup>19,27</sup>, W. N. JOHNSON<sup>1</sup>, S. JOHNSTON<sup>39</sup>, T. KAMAE<sup>3</sup>, H. KATAGIRI<sup>34</sup>, J. KATAOKA<sup>41</sup>, N. KAWAI<sup>42,43</sup>, M. KERR<sup>15</sup>, J. KNÖDLSER<sup>44</sup>, M. KRAMER<sup>32,33</sup>, M. KUSS<sup>4</sup>, J. LANDE<sup>3</sup>, L. LATRONICO<sup>4</sup>, M. LEMOINE-GOUMARD<sup>30,31</sup>, M. LLENA GARDE<sup>25,26</sup>, F. LONGO<sup>6,7</sup>, F. LOPARCO<sup>12,13</sup>, B. LOTT<sup>30,31</sup>, M. N. LOVELLETTE<sup>1</sup>, P. LUBRANO<sup>10,11</sup>, A. G. LYNE<sup>32</sup>, A. MAKEEV<sup>1,22</sup>, R. N. MANCHESTER<sup>39</sup>, M. MARELLI<sup>18</sup>, M. N. MAZZIOTTA<sup>13</sup>, W. MCCONVILLE<sup>19,27</sup>, J. E. MCENERY<sup>19,27</sup>, S. MCGLYNN<sup>26,45</sup>, C. MEURER<sup>25,26</sup>, P. F. MICHELSON<sup>3</sup>, W. MITTHUMSIRI<sup>3</sup>, T. MIZUNO<sup>34</sup>, A. A. MOISEEV<sup>20,27</sup>, C. MONTE<sup>12,13</sup>, M. E. MONZANI<sup>3</sup>, A. MORSELLI<sup>46</sup>, I. V. MOSKALENKO<sup>3</sup>, S. MURCIA<sup>3</sup>, P. L. NOLAN<sup>3</sup>, J. P. NORRIS<sup>47</sup>, A. NOUTSOS<sup>32</sup>, E. NUSS<sup>24</sup>, T. OHSUGI<sup>34</sup>, N. OMODEI<sup>4</sup>, E. ORLANDO<sup>48</sup>, J. F. ORMES<sup>47</sup>, M. OZAKI<sup>49</sup>, D. PANEQUE<sup>3</sup>, J. H. PANETTA<sup>3</sup>, D. PARENT<sup>1,22,30,31</sup>, V. PELASSA<sup>24</sup>, M. PEPE<sup>10,11</sup>, M. PESCE-ROLLINS<sup>4</sup>, M. PIERBATTISTA<sup>5</sup>, F. PIRON<sup>24</sup>, T. A. PORTER<sup>29</sup>, S. RAINÒ<sup>12,13</sup>, R. RANDO<sup>8,9</sup>, S. M. RANSOM<sup>50</sup>, M. RAZZANO<sup>4</sup>, A. REIMER<sup>3,51</sup>, O. REIMER<sup>3,51</sup>, T. REPOSEUR<sup>30,31</sup>, J. RIPKEN<sup>25,26</sup>, S. RITZ<sup>29</sup>, L. S. ROCHESTER<sup>3</sup>, A. Y. RODRIGUEZ<sup>16</sup>, R. W. ROMANI<sup>3</sup>, M. ROTH<sup>15</sup>, F. RYDE<sup>45,26</sup>, H. F.-W. SADROZINSKI<sup>29</sup>, A. SANDER<sup>40</sup>, P. M. SAZ PARKINSON<sup>29</sup>, J. D. SCARGLE<sup>52</sup>, C. SGRÒ<sup>4</sup>, E. J. SISKIND<sup>53</sup>, D. A. SMITH<sup>30,31</sup>, P. D. SMITH<sup>40</sup>, G. SPANDRE<sup>4</sup>, P. SPINELLI<sup>12,13</sup>, B. W. STAPPERS<sup>32</sup>, J.-L. STARCK<sup>5</sup>, M. S. STRICKMAN<sup>1</sup>, D. J. SUSON<sup>54</sup>, H. TAKAHASHI<sup>34</sup>, T. TANAKA<sup>3</sup>, J. B. THAYER<sup>3</sup>, J. G. THAYER<sup>3</sup>, G. THEUREAU<sup>23</sup>, D. J. THOMPSON<sup>19</sup>, S. E. THORSETT<sup>29</sup>, L. TIBALDO<sup>5,8,9</sup>, D. F. TORRES<sup>38,16</sup>, G. TOSTI<sup>10,11</sup>, A. TRAMACERE<sup>3,55</sup>, T. L. USHER<sup>3</sup>, A. VAN ET TEN<sup>3</sup>, V. VASILEIOU<sup>20,21</sup>, C. VENTER<sup>56</sup>, N. VILCHEZ<sup>44</sup>, V. VITALE<sup>46,57</sup>, A. P. WAITE<sup>3</sup>, E. WALLACE<sup>15</sup>, P. WANG<sup>3</sup>, P. WELTEVREDE<sup>32</sup>, B. L. WINER<sup>40</sup>, K. S. WOOD<sup>1</sup>, T. YLINEN<sup>26,45,58</sup>, AND M. ZIEGLER<sup>29</sup>

<sup>1</sup> Space Science Division, Naval Research Laboratory, Washington, DC 20375, USA

<sup>2</sup> National Research Council Research Associate, National Academy of Sciences, Washington, DC 20001, USA

<sup>3</sup> W. W. Hansen Experimental Physics Laboratory, Kavli Institute for Particle Astrophysics and Cosmology, Department of Physics and SLAC National Accelerator Laboratory, Stanford University, Stanford, CA 94305, USA

<sup>4</sup> Istituto Nazionale di Fisica Nucleare, Sezione di Pisa, I-56127 Pisa, Italy

<sup>5</sup> Laboratoire AIM, CEA-IRFU/CNRS/Université Paris Diderot, Service d'Astrophysique, CEA Saclay, 91191 Gif sur Yvette, France

<sup>6</sup> Istituto Nazionale di Fisica Nucleare, Sezione di Trieste, I-34127 Trieste, Italy

<sup>7</sup> Dipartimento di Fisica, Università di Trieste, I-34127 Trieste, Italy

<sup>8</sup> Istituto Nazionale di Fisica Nucleare, Sezione di Padova, I-35131 Padova, Italy

<sup>9</sup> Dipartimento di Fisica "G. Galilei," Università di Padova, I-35131 Padova, Italy

<sup>10</sup> Istituto Nazionale di Fisica Nucleare, Sezione di Perugia, I-06123 Perugia, Italy

<sup>11</sup> Dipartimento di Fisica, Università degli Studi di Perugia, I-06123 Perugia, Italy

<sup>12</sup> Dipartimento di Fisica "M. Merlin" dell'Università e del Politecnico di Bari, I-70126 Bari, Italy

<sup>13</sup> Istituto Nazionale di Fisica Nucleare, Sezione di Bari, 70126 Bari, Italy

<sup>14</sup> Laboratoire Leprince-Ringuet, École polytechnique, CNRS/IN2P3, Palaiseau, France

<sup>15</sup> Department of Physics, University of Washington, Seattle, WA 98195-1560, USA

<sup>16</sup> Institut de Ciències de l'Espai (IEEC-CSIC), Campus UAB, 08193 Barcelona, Spain

<sup>17</sup> Columbia Astrophysics Laboratory, Columbia University, New York, NY 10027, USA

<sup>18</sup> INFN-Istituto di Astrofisica Spaziale e Fisica Cosmica, I-20133 Milano, Italy

<sup>19</sup> NASA Goddard Space Flight Center, Greenbelt, MD 20771, USA; [ahardingx@yahoo.com](mailto:ahardingx@yahoo.com), [Tyrel.J.Johnson@nasa.gov](mailto:Tyrel.J.Johnson@nasa.gov)

<sup>20</sup> Center for Research and Exploration in Space Science and Technology (CRESST) and NASA Goddard Space Flight Center, Greenbelt, MD 20771, USA

<sup>21</sup> Department of Physics and Center for Space Sciences and Technology, University of Maryland Baltimore County, Baltimore, MD 21250, USA

<sup>22</sup> George Mason University, Fairfax, VA 22030, USA

<sup>23</sup> Laboratoire de Physique et Chimie de l'Environnement, LPCE UMR 6115 CNRS, F-45071 Orléans Cedex 02, and Station de radioastronomie de Nançay, Observatoire de Paris, CNRS/INSU, F-18330 Nançay, France

<sup>24</sup> Laboratoire de Physique Théorique et Astroparticules, Université Montpellier 2, CNRS/IN2P3, Montpellier, France

<sup>25</sup> Department of Physics, Stockholm University, AlbaNova, SE-106 91 Stockholm, Sweden

<sup>26</sup> The Oskar Klein Centre for Cosmoparticle Physics, AlbaNova, SE-106 91 Stockholm, Sweden

<sup>27</sup> Department of Physics and Department of Astronomy, University of Maryland, College Park, MD 20742, USA

<sup>28</sup> Dipartimento di Fisica, Università di Udine and Istituto Nazionale di Fisica Nucleare, Sezione di Trieste, Gruppo Collegato di Udine, I-33100 Udine, Italy

<sup>29</sup> Department of Physics and Department of Astronomy and Astrophysics, Santa Cruz Institute for Particle Physics, University of California at Santa Cruz, Santa Cruz, CA 95064, USA

<sup>30</sup> CNRS/IN2P3, Centre d'Études Nucléaires Bordeaux Gradignan, UMR 5797, Gradignan 33175, France

<sup>31</sup> Université de Bordeaux, Centre d'Études Nucléaires Bordeaux Gradignan, UMR 5797, Gradignan 33175, France

<sup>32</sup> Jodrell Bank Centre for Astrophysics, School of Physics and Astronomy, The University of Manchester, M13 9PL, UK

<sup>33</sup> Max-Planck-Institut für Radioastronomie, Auf dem Hügel 69, 53121 Bonn, Germany; [guillemo@mpifr-bonn.mpg.de](mailto:guillemo@mpifr-bonn.mpg.de)

- <sup>34</sup> Department of Physical Sciences, Hiroshima University, Higashi-Hiroshima, Hiroshima 739-8526, Japan
- <sup>35</sup> Agenzia Spaziale Italiana (ASI) Science Data Center, I-00044 Frascati, Rome, Italy
- <sup>36</sup> Department of Astronomy and Astrophysics, Pennsylvania State University, University Park, PA 16802, USA
- <sup>37</sup> Center for Space Plasma and Aeronomic Research (CSPAR), University of Alabama in Huntsville, Huntsville, AL 35899, USA
- <sup>38</sup> Institutió Catalana de Recerca i Estudis Avançats (ICREA), Barcelona, Spain
- <sup>39</sup> Australia Telescope National Facility, CSIRO, Epping NSW 1710, Australia
- <sup>40</sup> Department of Physics, Center for Cosmology and Astro-Particle Physics, The Ohio State University, Columbus, OH 43210, USA
- <sup>41</sup> Waseda University, 1-104 Totsukamachi, Shinjuku-ku, Tokyo 169-8050, Japan
- <sup>42</sup> Department of Physics, Tokyo Institute of Technology, Meguro City, Tokyo 152-8551, Japan
- <sup>43</sup> Cosmic Radiation Laboratory, Institute of Physical and Chemical Research (RIKEN), Wako, Saitama 351-0198, Japan
- <sup>44</sup> Centre d'Étude Spatiale des Rayonnements, CNRS/UPS, BP 44346, F-30128 Toulouse Cedex 4, France
- <sup>45</sup> Department of Physics, Royal Institute of Technology (KTH), AlbaNova, SE-106 91 Stockholm, Sweden
- <sup>46</sup> Istituto Nazionale di Fisica Nucleare, Sezione di Roma "Tor Vergata," I-00133 Rome, Italy
- <sup>47</sup> Department of Physics and Astronomy, University of Denver, Denver, CO 80208, USA
- <sup>48</sup> Max-Planck Institut für extraterrestrische Physik, 85748 Garching, Germany
- <sup>49</sup> Institute of Space and Astronautical Science, JAXA, 3-1-1 Yoshinodai, Sagami-hara, Kanagawa 229-8510, Japan
- <sup>50</sup> National Radio Astronomy Observatory (NRAO), Charlottesville, VA 22903, USA
- <sup>51</sup> Institut für Astro- und Teilchenphysik and Institut für Theoretische Physik, Leopold-Franzens-Universität Innsbruck, A-6020 Innsbruck, Austria
- <sup>52</sup> Space Sciences Division, NASA Ames Research Center, Moffett Field, CA 94035-1000, USA
- <sup>53</sup> NYCB Real-Time Computing Inc., Lattingtown, NY 11560-1025, USA
- <sup>54</sup> Department of Chemistry and Physics, Purdue University Calumet, Hammond, IN 46323-2094, USA
- <sup>55</sup> Consorzio Interuniversitario per la Fisica Spaziale (CIFS), I-10133 Torino, Italy
- <sup>56</sup> North-West University, Potchefstroom Campus, Potchefstroom 2520, South Africa; [Christo.Venter@nwu.ac.za](mailto:Christo.Venter@nwu.ac.za)
- <sup>57</sup> Dipartimento di Fisica, Università di Roma "Tor Vergata," I-00133 Rome, Italy
- <sup>58</sup> School of Pure and Applied Natural Sciences, University of Kalmar, SE-391 82 Kalmar, Sweden
- Received 2009 December 4; accepted 2010 February 8; published 2010 March 9

## ABSTRACT

Millisecond pulsars (MSPs) have been firmly established as a class of  $\gamma$ -ray emitters via the detection of pulsations above 0.1 GeV from eight MSPs by the *Fermi* Large Area Telescope (LAT). Using 13 months of LAT data, significant  $\gamma$ -ray pulsations at the radio period have been detected from the MSP PSR J0034–0534, making it the ninth clear MSP detection by the LAT. The  $\gamma$ -ray light curve shows two peaks separated by  $0.274 \pm 0.015$  in phase which are very nearly aligned with the radio peaks, a phenomenon seen only in the Crab pulsar until now. The  $\geq 0.1$  GeV spectrum of this pulsar is well fit by an exponentially cutoff power law with a cutoff energy of  $1.8 \pm 0.6 \pm 0.1$  GeV and a photon index of  $1.5 \pm 0.2 \pm 0.1$ , first errors are statistical and second are systematic. The near-alignment of the radio and  $\gamma$ -ray peaks strongly suggests that the radio and  $\gamma$ -ray emission regions are co-located and both are the result of caustic formation.

**Key words:** gamma rays: general – pulsars: general – pulsars: individual (PSR J0034–0534)

**Online-only material:** color figures

## 1. INTRODUCTION

Forty new pulsars have recently been observed to pulse in high-energy (HE),  $\geq 0.1$  GeV,  $\gamma$ -rays by the Large Area Telescope (LAT) aboard the *Fermi Gamma-ray Space Telescope* (formerly *GLAST*; Abdo et al. 2010a). Among these new detections are eight millisecond pulsars (MSPs; Abdo et al. 2009a). MSPs are thought to be older, recycled pulsars in binary systems (Alpar et al. 1982), a theory which has been supported by the discovery of millisecond pulsations from accreting low-mass X-ray binaries (LMXBs; e.g., Wijnands & van der Klis 1998) and more recently by observations of an MSP transitioning from the LMXB to the pulsar phase (Archibald et al. 2009). Usov (1983) first attempted to show that MSPs should be  $\gamma$ -ray emitters and could, possibly, have an even greater HE luminosity than the pulsar in the Crab nebula. Data from the *Energetic Gamma-Ray Experiment Telescope* (*EGRET*; Thompson 2008) were searched for both point source and pulsed emission from several MSPs (Fierro et al. 1995) and, while none were detected, upper limits were set which put useful constraints on MSP emission models. Kuiper et al. (2000) did report a marginal ( $\sim 4\sigma$ ) pulsed detection of the MSP PSR J0218+4232, which has been confirmed with *Fermi* (Abdo et al. 2009a). HE

$\gamma$ -ray emission has also been detected from the vicinity of the globular cluster 47 Tucanae with a  $\gamma$ -ray spectrum consistent, at the 95% confidence level, with the superposition of between seven and sixty-two MSPs (Abdo et al. 2009b). The Italian observatory *AGILE* has also reported a  $4.2\sigma$  detection of  $\gamma$ -ray pulsations from PSR B1821–24 in the globular cluster M28 (Pellizzoni et al. 2009).

*Fermi* began nominal sky-survey observations on 2008 August 4, viewing the entire sky every two orbits ( $\sim 3$  hr). The main instrument on *Fermi* is the LAT, which is a pair-conversion telescope sensitive to  $\gamma$ -rays with energies from 0.02 to  $>300$  GeV (Atwood et al. 2009). The LAT has a 2.4 sr field of view, a peak effective area of  $\sim 8000$  cm<sup>2</sup> above 1 GeV on axis, and a 68% containment radius of 0.6 at 1 GeV for events converting in the front section of the LAT. The LAT timing is derived from a GPS clock on the spacecraft, and events are time-stamped to an accuracy better than 1  $\mu$ s (Abdo et al. 2009c). Using approximately 13 months of LAT data, we have discovered  $\gamma$ -ray emission from PSR J0034–0534, which thus becomes the ninth  $\gamma$ -ray MSP detected with by *Fermi* LAT.

## 2. PSR J0034–0534

PSR J0034–0534 was discovered by Bailes et al. (1994) in a survey of the southern sky with the Parkes radio telescope. The pulsar is in a binary system with a 1.6 day orbital period. The

<sup>59</sup> Royal Swedish Academy of Sciences Research Fellow, funded by a grant from the K. A. Wallenberg Foundation.

**Table 1**  
PSR J0034–0534 Timing Parameters

Measured Parameters <sup>a</sup>	Values
$P$ (ms)	1.8771818845850(2)
$\dot{P}$ ( $10^{-21}$ )	4.966(1)
$\mu$ (mas yr <sup>-1</sup> ) <sup>b</sup>	31(9)
Derived Parameters <sup>c</sup>	Values
$d$ (kpc) <sup>d</sup>	$0.53 \pm 0.21$
$\dot{P}_{\text{corr}}$ ( $10^{-21}$ )	$2.63 \pm 1.64$
$B_{\text{surf}}$ ( $10^7$ G)	$7.12 \pm 2.22$
$\dot{E}_{\text{SD}}$ ( $10^{34}$ erg s <sup>-1</sup> )	$1.57 \pm 0.98$
$B_{\text{LC}}$ ( $10^4$ G)	$9.89 \pm 3.09$

**Notes.**

<sup>a</sup> Values in parentheses are rms errors on the last digit.

<sup>b</sup> Hobbs et al. (2005).

<sup>c</sup> Derived using  $\dot{P}_{\text{corr}}$ , which accounts for the Shklovskii effect.

<sup>d</sup> DM-derived using the NE2001 model of Cordes & Lazio (2002).

initial observations measured a spin period ( $P$ ) of 1.877 ms, which makes this the fastest  $\gamma$ -ray MSP yet detected with the LAT, and a period derivative ( $\dot{P}$ ) of  $6.7 \times 10^{-21}$ . Table 1 lists some of the measured and derived timing parameters for PSR J0034–0534 using the radio data described in Section 3.1. The derived quantities in Table 1 are corrected for the Shklovskii effect (Shklovskii 1970) and assume a moment of inertia  $I = 10^{45}$  g cm<sup>2</sup>. Abdo et al. (2009a) observed that  $\gamma$ -ray MSPs had similar spectral properties and, due to their short periods, comparable magnetic field strengths at the light cylinder ( $B_{\text{LC}}$ ) to those of younger  $\gamma$ -ray pulsars. Additionally, Abdo et al. (2010a) noted a weak correlation of cutoff energy with  $B_{\text{LC}}$  for all 46  $\gamma$ -ray pulsars detected by the LAT in the first six months. Of the  $\gamma$ -ray MSPs detected so far only PSR J0218+4232 has a higher value of  $B_{\text{LC}}$  than PSR J0034–0534 while most of the younger  $\gamma$ -ray pulsars detected with *Fermi* have lower values of  $B_{\text{LC}}$ .

Large values of  $B_{\text{LC}}$  have been linked to giant pulses (GPs) in the radio (Cognard et al. 1996; Knight et al. 2005) and the relatively large value for PSR J0034–0534 prompted several GP searches (Romani & Johnston 2001; McLaughlin & Cordes 2003; Knight et al. 2005) though none were detected. *Hubble Space Telescope* observations revealed an optical counterpart to the binary companion of PSR J0034–0534 consistent with a white dwarf hypothesis (Lundgren et al. 1996). Infrared observations of PSR J0034–0534 only put upper limits on the flux density of any surrounding debris disk (Greaves & Holland 2000; Lazio & Fischer 2004). *XMM-Newton* observations revealed a low significance ( $<3\sigma$ ) X-ray source 0.2'' from the radio position of PSR J0034–0534, but no pulsed signal was detected from the source and a firm identification could not be made (Zavlin 2006). The *EGRET*  $3\sigma$  point-source flux upper limit, 0.1–10 GeV, for PSR J0034–0534 of  $15.2 \times 10^{-8}$  cm<sup>-2</sup> s<sup>-1</sup> (Fierro et al. 1995) is an order of magnitude above the LAT flux in Section 4.2.

### 3. OBSERVATIONS

#### 3.1. Radio Timing

The timing solution used for PSR J0034–0534 has been derived from observations carried out at the Nançay radio telescope in France (Theureau et al. 2005) and the Westerbork Synthesis Radio Telescope (WSRT) in the Netherlands (Karuppusamy et al. 2008), using 170 times of arrivals (TOAs)

recorded between 2005 October 26 and 2009 August 24. Among the 170, 139 were recorded at the WSRT at frequencies between 314 MHz and 376 MHz with a mean uncertainty of  $2.5 \mu\text{s}$  and a bandwidth of 10 MHz (B. W. Stappers et al. 2010, in preparation). The remaining TOAs were recorded at the Nançay radio telescope at 1398 MHz with a mean uncertainty of  $3.2 \mu\text{s}$  with a bandwidth of 64 MHz before 2008 June 13 and 128 MHz thereafter (Cognard et al. 2009). This multiple-frequency data set tightly constrains the dispersion measure (DM), which is crucial for profile comparisons at different wavelengths. The ephemeris was derived using the TEMPO2<sup>60</sup> pulsar timing package (Hobbs et al. 2006), fitting for the rotation frequency and its first derivative while accounting for the binary motion of the MSP. The combined timing solution gives a post-fit rms of  $7.1 \mu\text{s}$  and a DM measurement of  $13.76517 \pm 0.00004$  cm<sup>-3</sup> pc, with no indication of variation with time. The uncertainty in the DM leads to an uncertainty of less than  $2 \mu\text{s}$  in the extrapolation of 300 MHz arrival times to infinite frequency, negligible for the low-statistics gamma-ray light curve of PSR J0034–0534. Using the NE2001 electron density model of Cordes & Lazio (2002)<sup>61</sup> and the measured DM gives a distance of  $d = 0.53 \pm 0.21$  kpc, assuming 40% uncertainty due to fluctuations in the free electron density (Briskin et al. 2002). With this data set it was not possible to measure the timing parallax and to extract a more accurate distance measurement. However, for a pulsar at a distance of  $\sim 0.5$  kpc and near the ecliptic plane the contribution of parallax to timing residuals is less than  $2.4 \mu\text{s}$  (Lorimer & Kramer 2004) and thus well below the precision of this ephemeris. This timing solution will be made available through the Fermi Science Support Center.<sup>62</sup>

#### 3.2. LAT Data Selection

Analysis of LAT data was done using the *Fermi* Science Tools<sup>63</sup> (STs) v9r15p2. The *Fermi* ST *gtselect* was used to select events which had reconstructed sky directions within  $10^\circ$  of the radio position of PSR J0034–0534, energies from 0.1 to 100 GeV, zenith angles  $\leq 105^\circ$ , and spanning 2008 August 4 to 2009 September 10. Events were required to belong to the “Diffuse” class of events as defined under the P6\_V3 instrument response functions (IRFs), those with the highest probability of being photons (Atwood et al. 2009). Additionally, the *Fermi* ST *gtmktime* was used to exclude times when the rocking angle of the instrument exceeded  $52^\circ$  and when Earth’s limb infringed upon the  $10^\circ$  region of interest. The events were then phase folded with the radio timing solution using the *Fermi* plug-in<sup>64</sup> now provided with the TEMPO2 software.

## 4. RESULTS

#### 4.1. Light Curve

Events found within  $0.8^\circ$  of PSR J0034–0534 were selected from the LAT data described in Section 3.2 and tested for periodicity with the *Fermi* ST *gtptest*. The result was an H-test (de Jager et al. 1989) value of 47.7 with a chance probability of  $6.8 \times 10^{-8}$ , corresponding to a pulsed detection significance of  $5.4\sigma$ . Figure 1 shows the folded light curve of these events

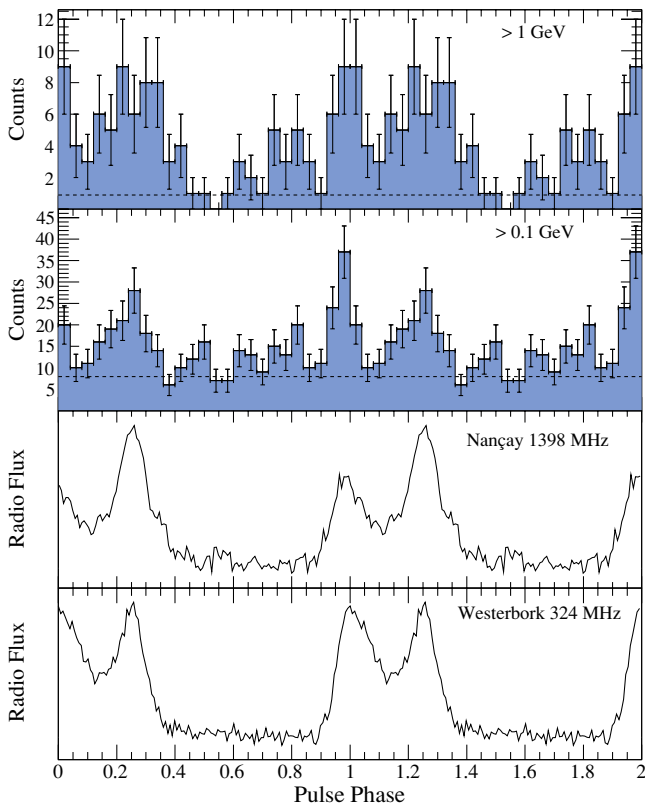
<sup>60</sup> <http://tempo2.sourceforge.net/>

<sup>61</sup> [http://rsd-www.nrl.navy.mil/7213/lazio/ne\\_model/](http://rsd-www.nrl.navy.mil/7213/lazio/ne_model/)

<sup>62</sup> <http://fermi.gsfc.nasa.gov/ssc/data/access/lat/ephems/>

<sup>63</sup> <http://fermi.gsfc.nasa.gov/ssc/data/analysis/scitools/overview.html>

<sup>64</sup> [http://fermi.gsfc.nasa.gov/ssc/data/analysis/scitools/pulsar\\_analysis\\_appendix\\_C.html#calculatePulsePhase](http://fermi.gsfc.nasa.gov/ssc/data/analysis/scitools/pulsar_analysis_appendix_C.html#calculatePulsePhase)



**Figure 1.** Top two panels show the phase-folded light curve of PSR J0034–0534 for LAT events above 1 GeV and above 0.1 GeV within 0.8 of the radio position.  $\gamma$ -ray light curves are shown across two rotations with 25 bins per rotation. The dashed horizontal lines correspond to the background levels estimated from the simulation described in Section 4.2. The bottom two panels show the Nançay and WSRT radio profiles; the vertical axes are in arbitrary units.

(A color version of this figure is available in the online journal.)

over two rotation periods for events above 0.1 GeV and 1 GeV as well as the 300 MHz WSRT and 1.4 GHz Nançay radio profiles. There is a small contribution to the pulse width in the radio profiles due to scattering; however, this contribution is much less than the bin width used in Figure 1. The  $\gamma$ -ray light curve of PSR J0034–0534 shows two peaks which are very nearly aligned with the radio peaks. This near-alignment of the radio and  $\gamma$ -ray peaks is very reminiscent of what is seen in the Crab pulsar (e.g., Abdo et al. 2010b) which is nearly aligned in radio, optical, X-ray, and  $\gamma$ -rays (GeV and TeV). The  $\geq 0.1$  GeV light curve in Figure 1 was fit with two Lorentzians plus a constant offset, fixed at the value of the background estimate shown, which gave a reduced  $\chi^2$  value of  $\sim 1.4$  indicating good agreement with the data. Table 2 lists the peak positions ( $\phi_i$ ), full width half-maximum ( $\text{FWHM}_i$ ), radio to  $\gamma$ -ray phase lags ( $\delta_i$ ), and peak separation ( $\Delta$ ) values. The phase lag values in Table 2 were calculated by assuming the first radio peak to be at phase 0 and estimating the second at phase 0.258, using the 324 MHz radio profile. The phase lag in the second peak is statistically consistent with 0 while the first peak has a significant, but small, offset from the radio. Fitting the  $\gamma$ -ray light curve with asymmetric Lorentzians did not improve the fit, though with more data the second peak may show significant asymmetry. Using only events  $\geq 1.4$  GeV gives a pulsed detection of  $3\sigma$  while using events  $\geq 2$  GeV gives a pulsed detection of only  $1.6\sigma$ . This indicates that there is significant evidence for emission up to almost 2 GeV from PSR J0034–0534.

**Table 2**  
PSR J0034–0534  $\gamma$ -ray Parameters

Light Curve Parameters <sup>a</sup>	Best-fit Values
$\phi_1$	$-0.027 \pm 0.008$
$\text{FWHM}_1$	$0.066 \pm 0.019$
$\delta_1$	$-0.027 \pm 0.008$
$\phi_2$	$0.247 \pm 0.013$
$\text{FWHM}_2$	$0.106 \pm 0.038$
$\delta_2$	$0.011 \pm 0.013$
$\Delta$	$0.274 \pm 0.015$
Spectral Parameters <sup>b</sup>	Best-fit Values
$N_0(10^{-9} \text{ cm}^{-2} \text{ s}^{-1} \text{ GeV}^{-1})$	$6.9 \pm 1.8 \pm 0.2$
$\Gamma$	$1.5 \pm 0.2 \pm 0.1$
$E_C$ (GeV)	$1.7 \pm 0.6 \pm 0.1$
$F(10^{-8} \text{ cm}^{-2} \text{ s}^{-1})$	$2.7 \pm 0.5 \pm 0.4$
$h(10^{-11} \text{ erg cm}^{-2} \text{ s}^{-1})$	$1.9 \pm 0.2 \pm 0.1$

**Notes.**

<sup>a</sup> Errors are statistical. Parameters are described in Section 4.1.

<sup>b</sup> First errors are statistical and second are systematic. Parameters are described in Section 4.2.

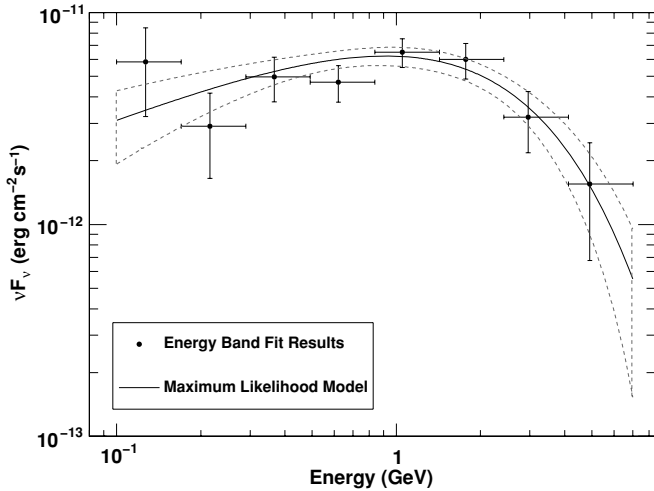
#### 4.2. Spectrum

An unbinned maximum likelihood method (Cash 1979; Mattox et al. 1996), using the pyLikelihood python module included with the *Fermi* STs, was used to fit the region around PSR J0034–0534. All point sources found above the background with test statistic  $\geq 25$  in a preliminary version of the 1FGL catalog (Abdo et al. 2010c) and within  $15^\circ$  of PSR J0034–0534 were modeled with power-law spectra. The parameters of those point sources  $> 10^\circ$  from PSR J0034–0534 were held fixed in the fit. The Galactic diffuse emission was modeled using the gll\_iem\_v02 map cube. The extragalactic diffuse and residual instrument background components were modeled jointly using the isotropic\_iem\_v02 template. Both diffuse models are available for download with the *Fermi* STs package. The  $\gamma$ -ray spectrum of PSR J0034–0534 was modeled as both a power law and a simple exponentially cutoff power law, Equation (1) with  $b \equiv 1$ , in separate fits:

$$\frac{dN}{dE} = N_0 \left( \frac{E}{1 \text{ GeV}} \right)^{-\Gamma} \exp \left[ - \left( \frac{E}{E_C} \right)^b \right]. \quad (1)$$

Using the likelihood ratio test, the simple exponentially cutoff power-law model is preferred over a power law at the  $4.5\sigma$  level. If the emission were to come from very near the stellar surface, the  $\gamma$ -ray spectrum could be hyper-exponentially cutoff, with  $b > 1$ , due to pair attenuation by the magnetic field (Daugherty & Harding 1996). Low-altitude emission may be expected given the near-alignment of the  $\gamma$ -ray and radio peaks. Assuming a dipolar magnetic field, the predicted pair attenuation cutoff energy is larger than the curvature radiation cutoff energy for nearly all MSPs (Harding et al. 2005); however, if the field is not dipolar, the surface magnetic field could be larger and the pair attenuation cutoff energy could be low enough to dominate. The spectrum of PSR J0034–0534 was also fit allowing the  $b$  parameter to be free. This fit returned a value of  $b$  not statistically different from 1 and the  $b \equiv 1$  model is still preferred by the likelihood ratio test, which is in agreement with the implications of the light curve modeling in Section 5.1.

The  $\gamma$ -ray energy spectrum of PSR J0034–0534, with  $b = 1$ , is shown in Figure 2. The plotted points in Figure 2 were derived



**Figure 2.** Phase-averaged  $\gamma$ -ray energy spectrum of PSR J0034–0534. Plotted points are from likelihood fits to individual energy bands where the pulsar is modeled as a power law; solid black line is the maximum likelihood model from fitting the full energy range; dashed gray lines are the  $1\sigma$  errors on the model. All sources described in Section 4.2 were modeled but only the parameters of those within  $6^\circ$  were left free in the fits. For each energy band, the pulsar was found above the background with a test statistic of at least 6,  $\geq 2\sigma$  for two degrees of freedom.

from likelihood fits to each individual energy band, in which it was assumed the pulsar had a power-law spectrum. The energy bands were constructed to be of equal size in log space, and the last band was chosen to be that which contained the highest energy event, 6.9 GeV, found consistent with the pulsar position within the 95% containment radius. The best-fit parameters are given in Table 2, where the first errors are statistical and the second are systematic. The systematic uncertainties were estimated by applying the same fitting procedures described above and comparing results using bracketing IRFs where the effective area has been perturbed by  $\pm 10\%$  at 0.1 GeV,  $\pm 5\%$  near 0.5 GeV, and  $\pm 20\%$  at 10 GeV with linear extrapolations, in log space, between. As a cross check, the  $\gamma$ -ray spectrum of PSR J0034–0534 was also fit with a binned likelihood estimator, *ptlike*, which computes the photon counts in a point-source-weighted aperture in excess of background counts. The *ptlike* results agree with the values quoted in Table 2 within statistical and systematic errors. Comparison with Table 1 of Abdo et al. (2009a) shows that the spectrum of PSR J0034–0534 is very typical of the  $\gamma$ -ray MSPs known to date. Table 2 also lists the integrated photon flux ( $F$ ) and energy flux ( $h$ ) from 0.1 to 100 GeV.

To search for evidence of modulation at the orbital period, events were selected from the data described in Section 3.2 within  $5^\circ$  of the pulsar and with reconstructed energies between 0.1 and 10 GeV. The modulation was assumed to be sinusoidal and a maximum likelihood method was used to fit the fraction of the average flux modulated at the orbital period. It might be expected that an unpulsed component of emission from, for example, particle acceleration in the wind termination shock would show the strongest orbital modulation and thus choosing an off-pulse phase window would be best for this search. However, the phase-averaged flux was chosen due to the fact that the background estimate shown in Figure 1 does not provide any strong evidence for an unpulsed component. The likelihood was constructed by holding the spectral parameters for all sources at the phase-averaged fit values and maximizing with respect to the modulated flux and the unknown orbital phase of peak emission.

There is no evidence for modulation at the orbital period with a 95% confidence level upper limit on any modulation of 35% of the average flux.

The *Fermi* ST *gtobssim* was used to simulate the region around PSR J0034–0534 using the fit results from the maximum likelihood analysis described in Section 4.2. The simulation included all point sources within  $15^\circ$  of the pulsar and both diffuse backgrounds but did not include the pulsar or a model of the  $\gamma$ -ray albedo from the Earth. The simulation start and stop times were matched to those in the event file as closely as possible. The same cuts described in Section 4.1 were applied to the simulated data in order to get the background estimates shown in Figure 1.

## 5. DISCUSSION

### 5.1. Light Curve Modeling

In nearly all known  $\gamma$ -ray pulsars with radio counterparts the  $\gamma$ -ray peak(s) lags the radio peak(s) by at least 0.05 in phase. The radio profile has traditionally been modeled assuming core and conal beams centered on the magnetic axis (Rankin 1993) and emitted at low altitude relative to the light cylinder radius ( $R_{LC}$ ). Thus, the phase lags between radio and  $\gamma$ -rays have been interpreted as indicating different emission altitudes for these two wavebands, with the  $\gamma$ -ray emission coming from outer gaps (OGs; Romani & Yadigaroglu 1995) or slot gaps (Muslimov & Harding 2004), which have a two-pole caustic (TPC) geometry (Dyks & Rudak 2003), reaching much higher altitudes. The emission peaks in OG and TPC geometries are due to the formation of caustics at phases where relativistic aberration and time-of-flight delays nearly cancel delays from magnetic field curvature on trailing field lines (Morini 1983).

Venter et al. (2009) modeled the light curves of the first eight  $\gamma$ -ray MSPs seen by *Fermi* and observed two distinct subclasses. The radio emission for all eight was fit using a single-emission-height conal model. The  $\gamma$ -ray light curves of six MSPs were well modeled using an outer-magnetospheric geometry (TPC/OG model), while those of the remaining two were modeled using a pair-starved polar cap (PSPC) model in which the  $\gamma$ -ray emission originates from the full open-field-line volume in the pulsar magnetosphere, even up to high altitudes. In the TPC/OG case the  $\gamma$ -ray profile lags the radio, while the radio lags the  $\gamma$ -ray pulse in the PSPC case. In contrast, PSR J0034–0534 is the first MSP for which the radio and  $\gamma$ -ray profiles are observed to be nearly aligned, providing strong evidence for co-located emission regions. The term “co-located” is taken to mean that the  $\gamma$ -ray and radio photons are thought to be generated at similar, although not identical, locations in the magnetosphere. Fully overlapping emitting regions of the same dimensions will lead to identical light curves in these different wavebands, which is not observed. On the contrary, the different light curve shapes at different energies seem to imply that the radio emission region is smaller, and a subset of the  $\gamma$ -ray emission region in the case of extended, higher-altitude emission. The near-alignment of the  $\gamma$ -ray and radio profiles suggests two plausible configurations: either both components originate near the polar cap (PC) or both are emitted in the outer magnetosphere. For both possibilities the altitude, extent, and degree to which the radio and  $\gamma$ -ray emission regions overlap are limited by the shapes of the radio and  $\gamma$ -ray light curves.

In the first case, relativistic effects tend to smear out the leading peaks while piling up photons in the trailing peaks,

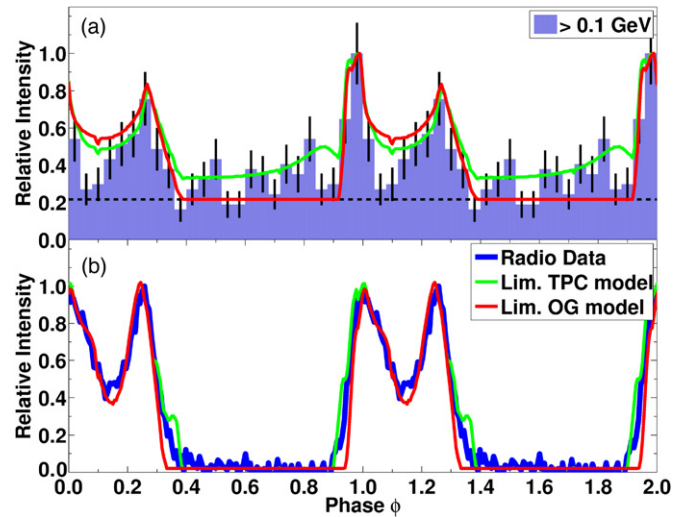
assuming constant-emissivity annular gaps near the stellar surface extending from  $\sim 0.1R_{\text{LC}}$  to  $0.2R_{\text{LC}}$ . This is contrary to what is observed in the  $\gamma$ -ray light curve. It is also difficult to reproduce the symmetric radio peaks assuming emission near the PC, even for emission at the stellar surface. If the emission regions are too high in altitude (or their extent is too large), the relativistic effects would be boosted (since the corresponding phase shifts due to these effects scale as  $\sim -r/R_{\text{LC}}$ ) and the peaks would be even more asymmetric, with a sharp trailing peak. Conversely, too little overlap would negate the phase alignment.

There is however a special solution that is an exception to the rule for the low-altitude models. Usually, the peak separation ( $\Delta$ ) is defined as the difference in phase between the leading and trailing peak positions. In certain circumstances, the leading (smeared-out) and trailing (sharp) peaks appear “inverted” to an observer at a particular observer angle  $\zeta$ , the angle between the rotation axis and the observer’s line of sight. The trailing peak would be interpreted as the first peak and the leading peak as the second one, since the peak separation between the first and second peaks ( $1 - \Delta$  in normalized phase) would be smaller than 0.5. If the inclination angle between the rotation and magnetic axes ( $\alpha$ ) is small enough ( $\lesssim 10^\circ$ ), one may find solutions with relative peak intensities and separations that fit the data quite well. More details are provided in C. Venter & A. K. Harding (2010, in preparation). Although this is a valid solution, it is a less likely geometry due to the very specific choices of  $\alpha$  and  $\zeta$  that are needed to obtain a good fit. Unfortunately, the only radio polarization measurement of PSR J0034–0534 to date was inconclusive and unable to put any constraints on the pulsar geometry (Stairs et al. 1999).

A co-located outer-magnetospheric origin of both the radio and  $\gamma$ -ray radiation seems more likely. If this is the case, PSR J0034–0534 is the first example of yet another MSP subclass, distinct from the two  $\gamma$ -ray MSP subclasses found by Venter et al. (2009). Manchester (2005) has suggested that radio emission for young and MSPs may be generated in the outer magnetosphere, close to the  $\gamma$ -ray emission region, an idea which Weltevrede & Johnston (2008) explored by comparing the characteristics of pulsars with high and low  $\dot{E}_{\text{SD}}$  values in the Parkes multi-beam surveys. Additionally, Dyks et al. (2010) have proposed a model in which the radio emission for MSPs with symmetric, double-peaked radio features, like what is observed in PSR J0034–0534, arise from curvature radiation from plasma streams with a non-negligible range of emission altitudes.

Figure 3 shows model  $\gamma$ -ray and radio light curves generated in the context of geometric “limited TPC and OG models,” i.e., TPC/OG models with limited extent (along the B-field) of the emission regions. The minimum and maximum emission radii for both the radio and  $\gamma$ -ray components are constrained by the light curve shapes for each band: excluding lower-altitude emission lowers the off-pulse “shoulder emission” (i.e., emission between consecutive profiles at phases  $\sim 0.4$ – $0.9$ ), and “bridge emission” (inter-peak emission at phases  $\sim 0.0$ – $0.3$ ) while giving rise to sharper, more separated peaks. On the other hand, including more of the higher-altitude emission boosts the leading peak and eventually widens (and to a lesser extent boosts) the trailing peak. A more detailed treatment of these “limited TPC/OG models” can be found in C. Venter & A. K. Harding (2010, in preparation).

Given these constraints, the radio and  $\gamma$ -ray light curves are well modeled using  $\alpha = 30^\circ$ ,  $\zeta = 70^\circ$ , and a transverse gap



**Figure 3.** Top:  $\gamma$ -ray data and modeled light curves. Bottom: WSRT 324 MHz radio profile and modeled light curves. All modeled light curves were made using  $\alpha = 30^\circ$ ,  $\zeta = 70^\circ$ , and  $w = 0.05$ . The extent of the limited TPC and OG models is given in Section 5.1.

(A color version of this figure is available in the online journal.)

width of  $w = 0.05$  (the fractional angular width starting at the PC rim, and normalized to the colatitude of the rim). For the limited TPC models in Figure 3, the  $\gamma$ -ray emission region extends (in radius) from  $0.12R_{\text{LC}}$  to  $0.9R_{\text{LC}}$  (i.e., starting at the stellar surface) while the radio emission region extends from  $0.6R_{\text{LC}}$  to  $0.8R_{\text{LC}}$ . The ranges of emission radii for the limited OG models in Figure 3 are the same as those for the TPC model with the added caveat that the emission cannot extend below the null charge surface. The  $\gamma$ -ray model light curves provide a reasonable fit to the data, although they all somewhat over predict the bridge emission as compared to the prediction of the radio curves. The agreement of the observed and modeled profiles strongly suggests that both the  $\gamma$ -ray and radio pulses originate in the outer magnetosphere with the peaks formed by caustics. It is of interest to note that there is a slight excess of events in the  $\gamma$ -ray light curve immediately preceding the first peak which is currently insignificant. This feature is reproduced with the TPC model but not with the OG model, since it is produced by emission below the null charge surface. With more data, the presence or absence of this feature should become statistically better defined and will be useful in further discriminating between emission models.

## 5.2. Efficiency

The total luminosity in  $\gamma$ -rays from PSR J0034–0534 can be calculated using

$$L_\gamma = 4\pi f_\Omega h d^2. \quad (2)$$

The correction factor  $f_\Omega$  depends on the viewing geometry and beaming angle of the pulsar and is typically  $\sim 1$  for outer-magnetospheric emission models. Using an approach similar to Venter et al. (2009) and Watters et al. (2009) yields  $f_\Omega = 0.74$  for TPC models and  $f_\Omega = 0.45$  for OG models, assuming the same geometry used in Section 5.1. Using the derived energy flux from Table 2 and the DM-derived distance from Section 3.1 yields  $L_\gamma = 4.7(2.9) \pm 3.8(2.3) \times 10^{32}$  erg s $^{-1}$  for the TPC(OG) model.

Once the luminosity is known, the efficiency with which PSR J0034–0534 converts spin-down energy into  $\gamma$ -rays can

be calculated using

$$\eta_\gamma = \frac{L_\gamma}{\dot{E}_{SD}}, \quad (3)$$

where  $\dot{E}_{SD}$  is the rate at which energy is lost due to the pulsar spinning down. This gives an efficiency of  $\eta_\gamma = 0.03(0.02) \pm 0.03(0.02)$  for the TPC(OG) model. The derived efficiency for PSR J0034–0534 is on the low end of the efficiencies quoted in Table 1 of Abdo et al. (2009a), which were calculated assuming  $f_\Omega = 1$ , and lower than the upper limit of  $\sim 0.1$  estimated for MSPs in the GC 47 Tucanae (Abdo et al. 2009b). The large uncertainties of  $L_\gamma$  and  $\eta_\gamma$  are primarily due to the uncertainty of the DM-derived distance in the proper motion. A parallax measurement would greatly increase the precision of these values.

## 6. CONCLUSIONS

The MSP PSR J0034–0534 is the ninth  $\gamma$ -ray MSP detected with the *Fermi* LAT. The  $\gamma$ -ray spectral properties of PSR J0034–0534 are similar to those of other  $\gamma$ -ray MSPs detected by *Fermi* thus far; however, PSR J0034–0534 is (so far) unique in that it is the only known  $\gamma$ -ray MSP in which the radio and  $\gamma$ -ray peaks are very nearly aligned in phase. The near phase alignment can be interpreted as providing strong evidence for co-located emission regions. Within the context of geometric TPC and OG models, the radio and  $\gamma$ -ray light curves are well modeled by requiring that both emission regions be significantly extended in altitude. This implies that both the radio and  $\gamma$ -ray emission peaks are a result of caustic formation. A similar radio geometry was required to model the Crab  $\gamma$ -ray and radio light curves (Harding et al. 2008), which are also coincident in phase. As the *Fermi* mission continues and more  $\gamma$ -ray MSPs are detected, this new and interesting MSP subclass may be further populated.

The *Fermi* LAT Collaboration acknowledges generous ongoing support from a number of agencies and institutes that have supported both the development and the operation of the LAT as well as scientific data analysis. These include the National Aeronautics and Space Administration and the Department of Energy in the United States; the Commissariat à l’Energie Atomique and the Centre National de la Recherche Scientifique/Institut National de Physique Nucléaire et de Physique des Particules in France; the Agenzia Spaziale Italiana and the Istituto Nazionale di Fisica Nucleare in Italy; the Ministry of Education, Culture, Sports, Science and Technology (MEXT), High Energy Accelerator Research Organization (KEK) and Japan Aerospace Exploration Agency (JAXA) in Japan; and the K. A. Wallenberg Foundation, the Swedish Research Council and the Swedish National Space Board in Sweden.

Additional support for science analysis during the operations phase is gratefully acknowledged from the Istituto Nazionale di Astrofisica in Italy and the Centre National d’Études Spatiales in France.

The Nançay Radio Observatory is operated by the Paris Observatory, associated with the French Centre National de la Recherche Scientifique (CNRS).

The Westerbork Synthesis Radio Telescope is operated by Netherlands Foundation for Radio Astronomy, ASTRON.

## REFERENCES

- Abdo, A. A., et al. 2009a, *Science*, **325**, 848  
 Abdo, A. A., et al. 2009b, *Science*, **325**, 845  
 Abdo, A. A., et al. 2009c, *Astropart. Phys.*, **32**, 193  
 Abdo, A. A., et al. 2010a, *ApJS*, in press (arXiv:0910.1608)  
 Abdo, A. A., et al. 2010b, *ApJ*, **708**, 1254  
 Abdo, A. A., et al. 2010c, *ApJS*, submitted (arXiv:1002.2280)  
 Alpar, M. A., et al. 1982, *Nature*, **300**, 728  
 Archibald, A. M., et al. 2009, *Science*, **324**, 1411  
 Atwood, W. B., et al. 2009, *ApJ*, **697**, 1071  
 Bailes, M., et al. 1994, *ApJ*, **425**, L41  
 Briskin, W. F., Benson, J. M., Goss, W. M., & Thorsett, S. E. 2002, *ApJ*, **571**, 906  
 Cash, W. 1979, *ApJ*, **228**, 939  
 Cognard, I., Theureau, G., Desvignes, G., & Ferdman, R. 2009, Proc. Windows on the Universe, XXI Rencontres de Blois, France, in press (arXiv:0911.1612)  
 Cognard, I., et al. 1996, *ApJ*, **457**, L81  
 Cordes, J. M., & Lazio, T. J. W. 2002, arXiv:astro-ph/0207156  
 Daugherty, J. K., & Harding, A. K. 1996, *ApJ*, **458**, 278  
 de Jager, O. C., Raubenheimer, B. C., & Swanepoel, J. W. H. 1989, *A&A*, **221**, 180  
 Dyks, J., & Rudak, B. 2003, *ApJ*, **598**, 1201  
 Dyks, J., Rudak, B., & Demorest, P. 2010, *MNRAS*, **401**, 1781  
 Fierro, J. M., et al. 1995, *ApJ*, **447**, 807  
 Greaves, J. S., & Holland, W. S. 2000, *MNRAS*, **317**, L21  
 Harding, A. K., Stern, J. V., Dyks, J., & Frackowiak, M. 2008, *ApJ*, **680**, 1378  
 Harding, A. K., Usov, V. V., & Muslimov, A. G. 2005, *ApJ*, **622**, 531  
 Hobbs, G. B., Edwards, R. T., & Manchester, R. N. 2006, *MNRAS*, **369**, 655  
 Hobbs, G., et al. 2005, *MNRAS*, **360**, 974  
 Karuppusamy, R., Stappers, B. W., & van Straten, W. 2008, *PASP*, **120**, 191  
 Knight, H. S., et al. 2005, *ApJ*, **625**, 915  
 Kuiper, L., et al. 2000, *A&A*, **359**, 615  
 Lazio, T. J. W., & Fischer, J. 2004, *ApJ*, **128**, 842  
 Lorimer, D. R., & Kramer, M. 2004, *Handbook of Pulsar Astronomy* (Cambridge: Cambridge Univ. Press)  
 Lundgren, S. C., Foster, R. S., & Camilo, F. 1996, in ASP Conf. Ser. 105, IAU Colloq. 160, Pulsars: Problems and Progress, ed. M. Bailes, S. Johnston, & M. A. Walker (San Francisco, CA: ASP), 497  
 Manchester, R. N. 2005, *Ap&SS*, **297**, 101  
 Mattox, J. R., et al. 1996, *ApJ*, **461**, 396  
 McLaughlin, M. A., & Codes, J. M. 2003, *ApJ*, **596**, 982  
 Morini, M. 1983, *MNRAS*, **202**, 495  
 Muslimov, A. G., & Harding, A. K. 2004, *ApJ*, **606**, 1143  
 Pellizzoni, A., et al. 2009, *ApJ*, **695**, L115  
 Rankin, J. M. 1993, *ApJ*, **405**, 285  
 Romani, R. W., & Johnston, S. 2001, *ApJ*, **557**, L93  
 Romani, R. W., & Yadigaroglu, I. A. 1995, *ApJ*, **438**, 314  
 Shklovskii, I. S. 1970, *SvA*, **13**, 562  
 Stairs, I. H., Thorsett, S. E., & Camilo, F. 1999, *ApJ*, **123**, 627  
 Theureau, G., et al. 2005, *A&A*, **430**, 373  
 Thompson, D. J. 2008, *Rep. Prog. Phys.*, **71**, 116901  
 Usov, V. V. 1983, *Nature*, **305**, 409  
 Venter, C., Harding, A. K., & Guillemot, L. 2009, *ApJ*, **707**, 800  
 Watters, K. P., Romani, R. W., Weltevrede, P., & Johnston, S. 2009, *ApJ*, **695**, 1289  
 Weltevrede, P., & Johnston, S. 2008, *MNRAS*, **391**, 1210  
 Wijnands, R., & van der Klis, M. 1998, *Nature*, **394**, 344  
 Zavlin, V. E. 2006, *ApJ*, **638**, 951