



**HAL**  
open science

## Electronics and Trigger developments for the Diffractive Physics Proposal at 220 m from LHC-ATLAS

P. Le Dû, J.-F. Genat, O. Kepka, A. Kupco, C. Royon, T. Tic, V. Vrba

► **To cite this version:**

P. Le Dû, J.-F. Genat, O. Kepka, A. Kupco, C. Royon, et al.. Electronics and Trigger developments for the Diffractive Physics Proposal at 220 m from LHC-ATLAS. Topical Workshop on Electronics for Particle Physics (TWEPP-07), Sep 2007, Prague, Czech Republic. in2p3-00187257

**HAL Id: in2p3-00187257**

**<https://in2p3.hal.science/in2p3-00187257v1>**

Submitted on 14 Nov 2007

**HAL** is a multi-disciplinary open access archive for the deposit and dissemination of scientific research documents, whether they are published or not. The documents may come from teaching and research institutions in France or abroad, or from public or private research centers.

L'archive ouverte pluridisciplinaire **HAL**, est destinée au dépôt et à la diffusion de documents scientifiques de niveau recherche, publiés ou non, émanant des établissements d'enseignement et de recherche français ou étrangers, des laboratoires publics ou privés.

# Electronics and Trigger developments for the Diffractive Physics Proposal

at 220 m from LHC-ATLAS

P. Le Dû<sup>a</sup>, J-F Genat, O. Kepka<sup>b</sup>, A. Kupco<sup>b</sup>, C. Royon<sup>a</sup>, T. Tic<sup>b</sup>, V. Vrba<sup>b</sup>

<sup>a</sup>DAPNIA-SPP, Saclay F-91191, Gif-sur-Yvette Cedex, France

<sup>b</sup>Institute of Physics, Prague, Na Slovance 2, CZ-182 21 Praha 8, Czech Republik

[patrick.le-du@cea.fr](mailto:patrick.le-du@cea.fr)

## Abstract

The instrumentation consists of two sets of Roman Pots installed respectively at 216 and 224m on both sides from the ATLAS IP to measure with precision the position ( $< 10$  micrometers) and the timing ( $< 5$ ps) of the two back to back diffracted protons tracks. Each Roman Pot is equipped with several planes of Silicon strips detectors read out by a new version of the ATLAS Silicon tracker ABCD readout chip with a longer latency (6.4 microseconds) and fast OR outputs defining a track segment. These inputs are to be combined in time with the ATLAS level 1 trigger accept signal. In addition, these tracks are time filtered with a very fast timing detector (MCP-PMT) allowing to constraint further at the level 2 the position of the IP within a one millimetre precision. The description of the electronics and trigger system as well as the various technical issues associated with such challenging experiments (clocks, cabling, time monitoring) will be presented.

## I. INTRODUCTION

The motivation to install roman pot detectors at 220 m within ATLAS is under study [1]. It extends nicely the project of measuring the total cross sections using roman pots at 240 m by measuring hard diffraction at high luminosity in ATLAS in the LHC. It is also complementary to the FP420 project which aims at tagging protons at 420 m. The physics motivation of this project corresponds to different domains of diffraction:

- A better understanding of the inclusive diffraction mechanism at the LHC by studying in detail the structure of pomeron in terms of quarks and gluons as it was done at HERA. Of great importance is also the measurement of the exclusive production of diffractive events and its cross section in the jet channel as a function of jet transverse momentum. Its understanding is necessary to control the background to Higgs signal.
- Look for Higgs boson diffractive production in double pomeron exchange in the Standard Model or super symmetric extensions of the Standard Model. This is clearly a challenging topic especially at low Higgs boson masses where the Higgs boson decays in  $b\bar{b}$  and the standard non-diffractive search is possible. We will detail in the following the trigger strategy.

- Sensitivity to the anomalous coupling of the photon by measuring the QED production cross section of W boson pairs. This might be the best way to access the anomalous coupling before the start of the ILC.
- Photo-production of jets.
- Other topics such as looking for stop events or measuring the top mass using the threshold scan method which will depend strongly on the production cross section.

## II. TRIGGER

The topology of the typical event to be selected is presented in Figure 1. There are two selection schemes according to the two complementary possibilities of combining either the Roman pot stations at 220 m both sides of the ATLAS IP or one side with one 220 m Roman pot station with the FP420 information arriving only at the Level 2 trigger.

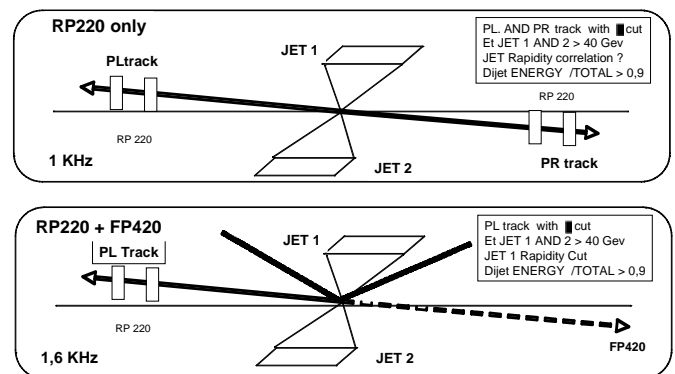


Figure 1: Trigger principle

In the first case we ask for a coincidence between tracks with  $\xi < 0,01$  in the left and right station. This PRETRIGGER signal will have to be merged with ATLAS level 1 Dijet  $E_t$  trigger  $> 40$  Gev AND a Dijet energy/total  $> 0,9$ . A rate of 1kHz is expected. Additional rate reduction would be possible by using the rapidity and azimuthal correlation.

In the second case, it is possible to combine one of the RP220 station (Left or Right) with the FP420 information arriving at L2. In this case, some additional cuts in the Dijet topology are required to reach an equivalent trigger rate of 1,6 kHz.

provided by associated pixels of the timing detector. from the roman pots stations.

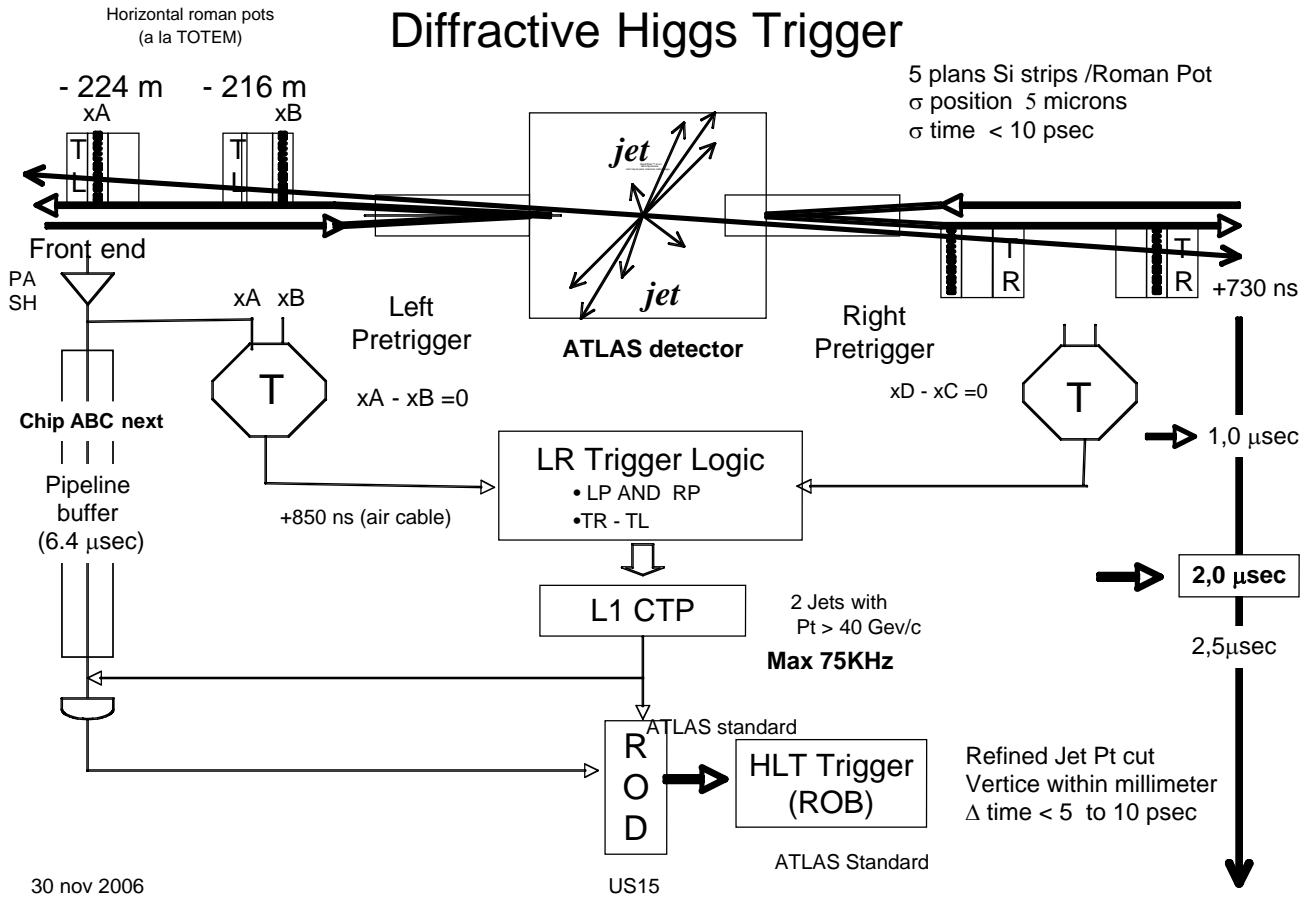


Figure 2: Trigger scheme and timing

The Roman Pot PRETRIGGER signal has to be integrated to the present ATLAS trigger scheme at the L1 (75 KHz maximum rate, 2.5 microseconds latency) and L2/L3 levels as presented in figure 2.

Each of the four Roman pots will have the same hardware configuration consisting of seven silicon edgeless strips detector planes followed by a pixilated timing device. Two Silicon strips planes oriented in the X direction are devoted to the PRETRIGGER. An upgrade version of the ABCNext chip with a fast output is foreseen to be developed to include the L1 trigger. The timing device is made of a MCP-PMT which collects the Cherenkov light produced by the incoming particle across a crystal radiator (Figure 3).

At LEVEL 1 a PRETRIGGER is foreseen with two steps Left-Right Tracking using the fast outputs of the silicon strips vertical planes of each Roman pot station. An hodoscope like track segment logic is required on both left and right stations prior to be merged as a signal entry in the central Atlas Level 1 (CTP). These signals are time filtered with a few ns gate

Roman Pot Layout

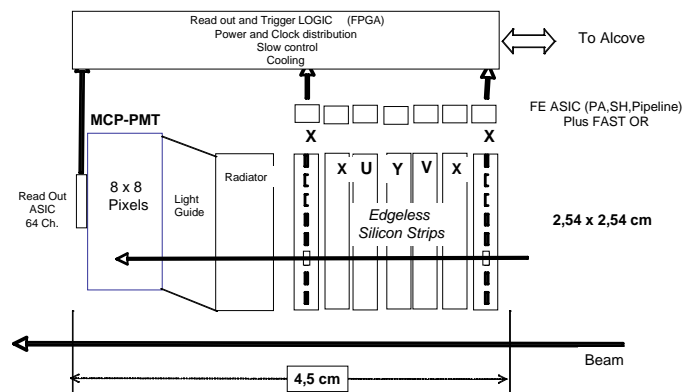


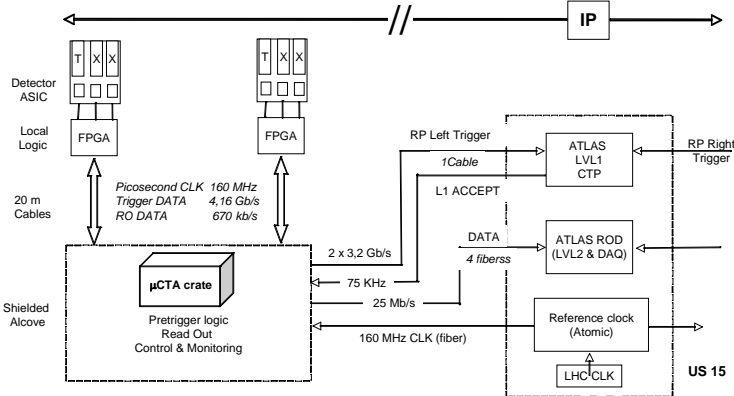
Figure 3: Roman pot layout

This should be done within the L1 CTP latency of about 2 microseconds leaving around 500ns for the full digital logic, taking into account the particles flight path and transit cables be combined with two jets with a large Pt >20 GeV/c to make the L1 diffractive trigger. A possible implementation of the various electronics functional blocks and cables as well

as the associated timing and data flow are presented in Fig 4.

In addition, using the pico-second timing detectors, it would be possible to give a rough estimate of the position of the vertex inside the 6 centimeters collision diamond (200 psec). It is however not yet clear at this stage of the study if this timing information can be fully exploited at this early stage level.

At LEVEL 2, the full digitized information of all the silicon strips planes will allow a precise reconstruction of each track hits with a precision of 5 micrometers. In addition the timing



information can be then fully used in order to isolate the relevant vertex with a precision of the millimeter or better.

Figure 4: Trigger implementation block diagram

### III. SILICON DETECTORS

Silicon detectors are envisaged for the Roman Pots as accurate position sensors. Silicon strips can currently achieve space resolutions down to a few micrometers. A resolution of 10-15  $\mu\text{m}$  is actually required. A timing resolution allowing to identify the beam crossing is also required.

Strips can be implemented as AC or DC coupled sensors depending whether the leakage current can be managed by the readout chip. As the area is small for these detectors (2cm x 2cm) and a high level of irradiation is not foreseen, the leakage current should be small enough to allow the use of DC detectors. However, there is not a significant extra cost for AC coupled detectors, and this conservative option has been chosen. Silicon detectors have to be sensitive as close as possible to the beam, a dead zone close to their edge of 20-40  $\mu\text{m}$  can be accepted, with the edge at 10 sigmas from the beam, i.e. 0.8mm.

#### A. Detectors characteristics

Five layers of detectors are planned, two vertical, one horizontal, one at 45 degrees, one at -45 degrees. Pitch can be 50  $\mu\text{m}$  in a first step, 25 $\mu\text{m}$  could be used at an extra cost, with pitch adapters to the readout chips whose pitch is presently 50  $\mu\text{m}$ .

Two extra layers of strips with a pitch of 100-200  $\mu\text{m}$  would be used for the trigger.

#### B. Roman Pots specific requirements

Detectors have to be edgeless to 20-40  $\mu\text{m}$ . CANBERRA has proposed an edge processing allowing to avoid surface currents leading to an undepleted area close to the edge. A dead area less than 30  $\mu\text{m}$  is expected. These detectors are presently manufactured and will be tested at Saclay.

#### C. Detectors specifications

The following specifications would meet the Roman Pots Silicon detectors requirements.

#### D. Prototypes and first tests

Several companies have been contacted, among them, CANBERRA has delivered four (non-edgeless) detectors prototypes, 128 channels at 50  $\mu\text{m}$  pitch (Figure 5) that are under evaluation at Prague FZU and at Saclay using a VME test stand developed in the context of the ATLAS Silicon Trackers provided by CERN [2], interfaced to the ABCD chips. Figure 6 shows the reverse current from 0 to 220 V biasing voltage for a 0.7cm<sup>2</sup> CANBERRA detector measured at The Institute of Physics, Prague, Czech Republik.

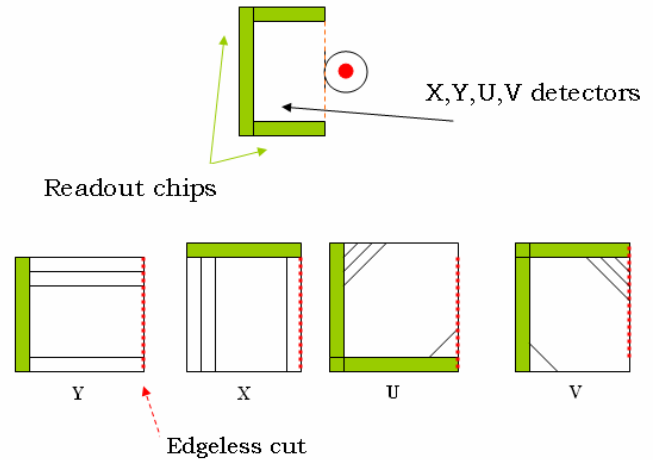


Figure 5: Detector geometries

Table 1: Silicon strips edgeless detector specifications

Dimensions	2x2cm <sup>2</sup>
Pitch	25-50 $\mu\text{m}$
AC coupled	10pF/cm > 200V
Interstrip cap	< 1.5pF
Full depletion	60-100V
Thickness	300 $\mu\text{m}$
Leakage	<50nA/cm <sup>2</sup> @200 V
Poly resistor	> 2G $\omega$
Edgeless (one side)	< 40 $\mu\text{m}$
Defective strips	< 1%
Radiation hardness	> 10 <sup>12</sup> n/cm <sup>2</sup>

#### IV. TIMING DETECTORS

The timing detectors are necessary at the highest luminosity of the LHC to identify from which vertex the protons are coming from. It is expected that up to 35 interactions occur at the same bunch crossing and we need to identify from which interaction, or from which vertex the protons are coming from.

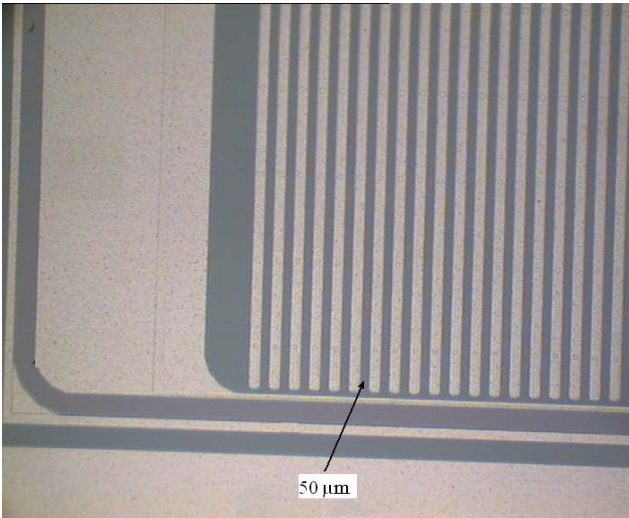


Figure 6: 50 µm pitch detectors from CANBERRA

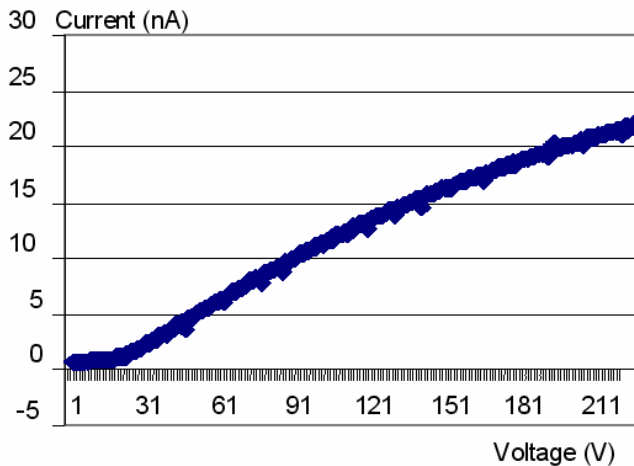


Figure 7: Reverse current (0.7 cm<sup>2</sup> detector)

A precision of the order of a few mm or 5-10 ps is required to distinguish between the different vertices and to make sure that the diffracted protons come from the hard interactions. Picosecond timing detectors are still a challenge and are developed in a collaboration between Saclay, Stony Brook, the University of Chicago and Argonne National Laboratory for medical and particle physics applications. The proton timings will be measured in a crystal of about 2.5 cm located inside the roman pots, and the signal will be read out by Micro-Channel Plates photo-multipliers developed by Photonis.

The space resolution of those detectors should be of the order of a few millimeters since at most two protons will be detected in those detectors for one given bunch crossing at the highest luminosity.

#### V. TIMING DETECTORS ELECTRONICS

MCP-PMT detectors are used to achieve picosecond time of flight in order to reconstruct vertices to a 1mm precision. The electronics has to digitize time differences in the range  $-200 +200$  ps without degrading significantly the MCP-PMT detector resolution. Present resolution of 30 ps (Time Transit Spread) has been measured for single photon at the University of Nagoya (Japan). Simulations at the Enrico Fermi Institute (IL USA) of MCP PMTs equipped with segmented anodes [3] predict sub-picosecond performance for 20 photons events, leading to 4 ps TTS, under the same conditions (single photon).

##### A. Time picking

Time picking optimisation requires a good knowledge of the detector signals, and the associated noise. Techniques to be implemented can be leading edge threshold, multiple threshold, constant fraction (many flavours), pulse sampling and reconstruction. Work is in progress to determine the best trade-off taking into account the available integrated circuit technologies (Silicon-Germanium, Deep Sub-Micron CMOS).

##### B. Time to digital conversion

Picosecond resolution is targeted at EFI Chicago, see [4] "Development of Front-end Electronics for Picosecond Resolution TOF Detectors", poster at this workshop by Fukun Tang, using a 250nm SiGe process. A time stretcher with a 200 slopes ratio is planned to expand the picosecond time range to fractions of nanoseconds. Time to digital conversion with 100 ps resolution can be implemented using FPGAs clocked at 250 MHz [5].

##### C. Implementation

The MCP-PMT is 2" x 2" large. An equal time path printed circuit board links the 64 anodes to four electronics channel, with traces lengths compensating for the time propagation of signals coming from any MCP-PMT location. Signal and ground return constitute a differential pair that couples capacitively to the MCP ground. An analogue card holds four time stretcher chips sending stretched pulses to an upper card housing an FPGA in charge of the 100ps time to digital conversion, all digital controls, and a Phase Locked Loop (PLL) for input clock jitter cleaning to 100-200ps. The time stretcher houses a second PLL at 2 GHz, cleaning the remaining jitter to better than 1ps. All three cards stacked represent a thickness of half an inch.

#### VI. CONCLUSION

This project aims at installing Roman pots at 220 m from the ATLAS interaction point. A combination of Silicon detectors and Micro Channel plates photomultipliers provide

both space and time resolution allowing to measure precisely the inclusive diffraction mechanism at LHC as well as exclusive diffractive events, and their cross section in the jet channel as a function of jet transverse momentum whose understanding is mandatory to control the background to Higgs signal.

It is also expected to look for the Higgs boson diffractive production in double pomeron exchange in the Standard Model or super symmetric extensions of the Standard Model.

## VII. REFERENCES

[1] ATLAS note about RP220 project, to be submitted.

[2] Shaun Roe, Francis Anghinolfi. Private communication.

[3] T. Credo, H. Frisch, H. Sanders, F. Tang, K. Byrum, G. Drake

MCP-PMT Anode Development for Picosecond-Resolution Time-of-Flight Detectors

2006 Nuclear Science Symposium and Medical Imaging Conference, Poster N23-4, Oct 29 – Nov 4, 2006 San Diego, CA, USA.

[4] F. Tang, J. Anderson, K. Byrum, G. Drake, H. Frisch, J-F. Genat, M. Heintz, H. Sanders.

Development of Front-end Electronics for Picosecond Resolution TOF Detectors. Poster at this Workshop.

[5] R. Szplet, J. Kalisz, R. Szymanowski.

Interpolating time counter with 100 ps resolution on a single FPGA device. IEEE Transactions on Instrumentation and Measurement, Vol 49, pp 879-883, 2000